

USB to Serial (RS-232) Adapter SAVR Compatibility Instructions

Revision IR – March 9, 2009

Author:

Jeff Behlendorf

All rights reserved. This document contains information that is proprietary and confidential. Distribution to third parties or reproduction without the expressed written permission of the authors is prohibited.



Revision History

Rev	Date	Pages	Change Description
IR	Mar. 9, '09	All	Initial Version



Discussion

With the decline in the number of new computers equipped with an old style RS-232 serial port, a growing number of SAVR users are using USB to Serial adapter cables. These work great, but you need to make sure all of the settings are correct for interfacing with the SAVR.

In these instructions we will walk through the basics of where to change the settings and what they should be for compatibility with the SAVR devices.

These instructions are written using Windows XP Media Center Edition but the basics will apply regardless of what version of windows you are using.

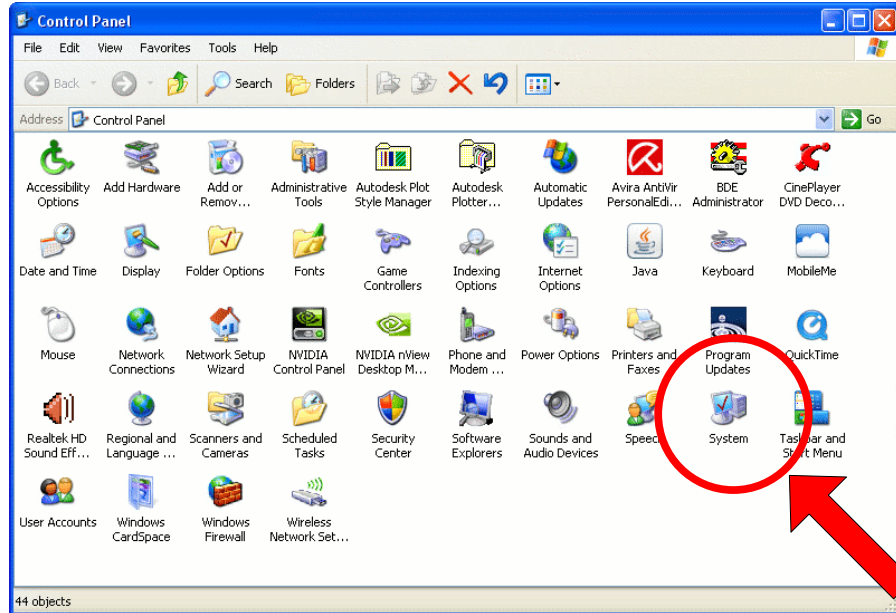
Instructions

1. From the *Start Menu* open the *Control Panel* (figure 1).

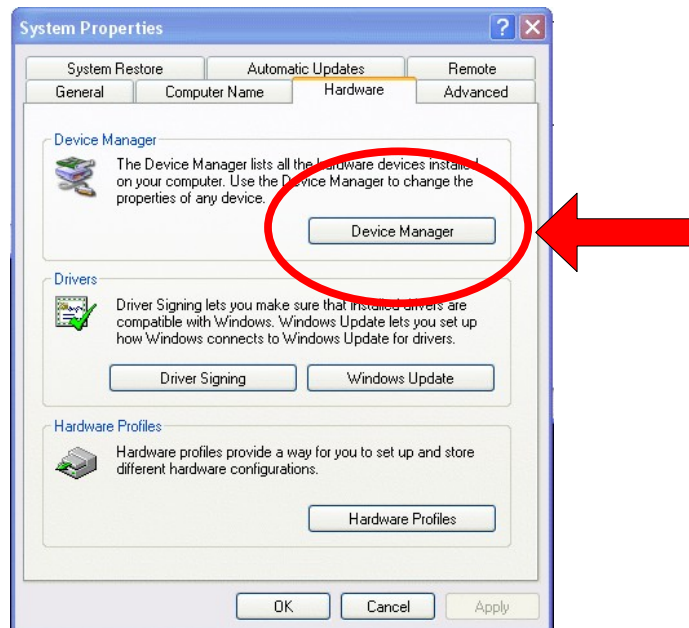




2. Once in the *Control Panel*, select the *System* icon. (Figure 2)



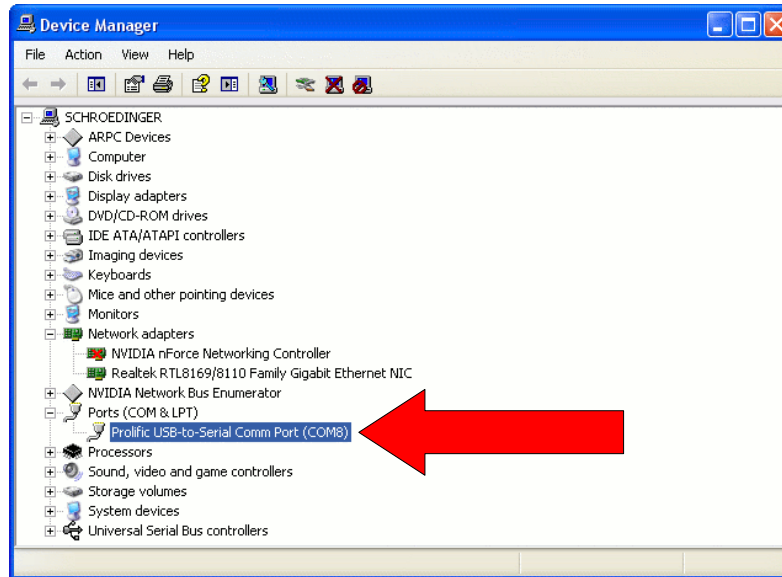
3. Once in the *System* panel, select the *Device Manager* (Figure 3).



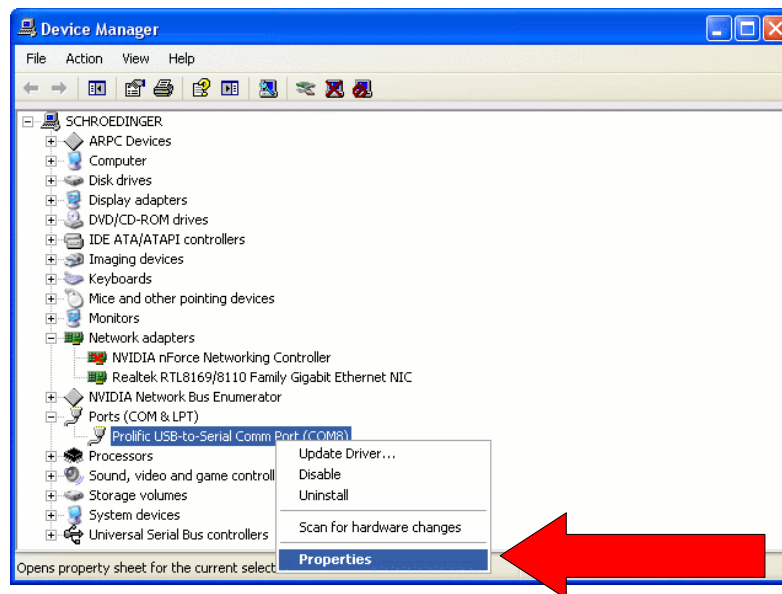
All rights reserved. This document contains information that is proprietary and confidential. Distribution to third parties or reproduction without the expressed written permission of the authors is prohibited.



4. Once in the *Device Manager* locate the heading *Ports (COM & LPT)*. Expand the category and select the COM port to which the SAVR device is attached.



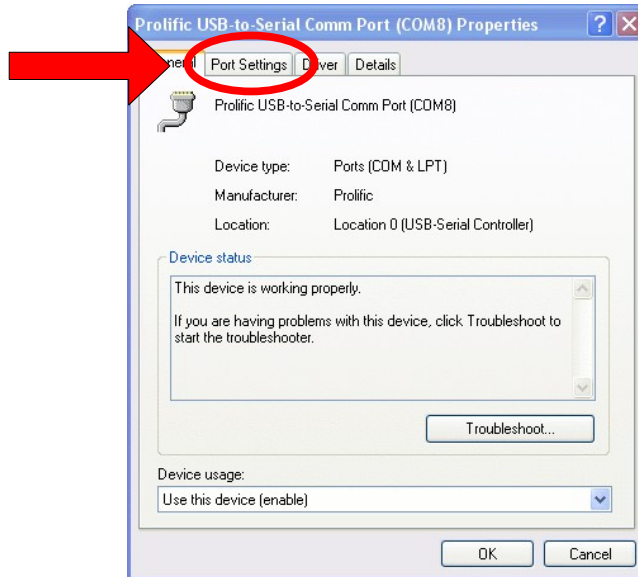
5. Right click on the desired device and select *Properties* from the displayed context menu.



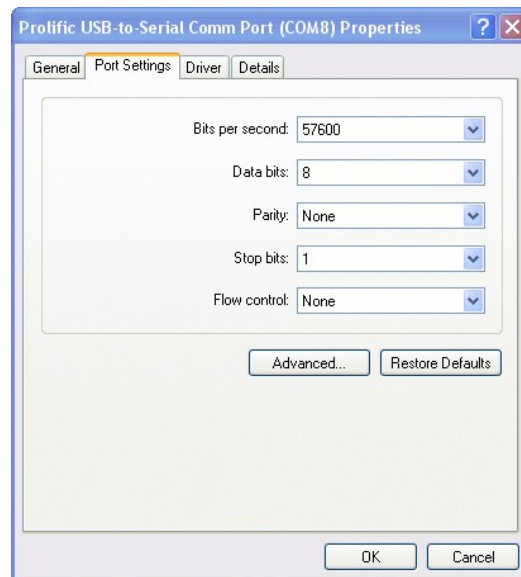
All rights reserved. This document contains information that is proprietary and confidential. Distribution to third parties or reproduction without the expressed written permission of the authors is prohibited.



6. Once in the COM port driver panel, select the **Port Settings** tab at the top of the dialog box.



7. In the port settings dialog, make sure the following settings are reflected. These parameters match the settings required for compatibility with the SAVR series of devices.



8. Select **OK** and enjoy!